

BOSS'S CABIN

Premium Office Furniture

WWW.BOSSESCABIN.COM

ADMINISTRATIVE OFFICE
544 TTK Road,
Alwarpet
Chennai - 600018, India
Tel: +91 44 42030741, 24617933

CHENNAI SHOWROOM
17, Selvarangaraja Street
Anna Salai, Saidapet
Chennai - 600015
Tel: +91 44 42040568, 42040569

BANGALORE SHOWROOM
14, Langford Garden Richmond
Circle
Bangalore - 560025
Tel: +91 80 22222459, 42129128



STEELBOX-II

BOSS'S CABIN

Premium Office Furniture



STEELBOX II.

Steelbox II is the masterpiece cabinet system presented by Sunon with full-course independence in terms of R&D, manufacturing, and logistics. The steel product manufacturing base where Steelbox II is produced is located in Hangzhou, the E-commerce capital of China, and imported advanced manufacturing equipment and collected talents home and abroad. Intelligent digital operations help establish the service system featured by quality control, cost management, delivery guarantee, and personalize customization, all for creating value for clients.

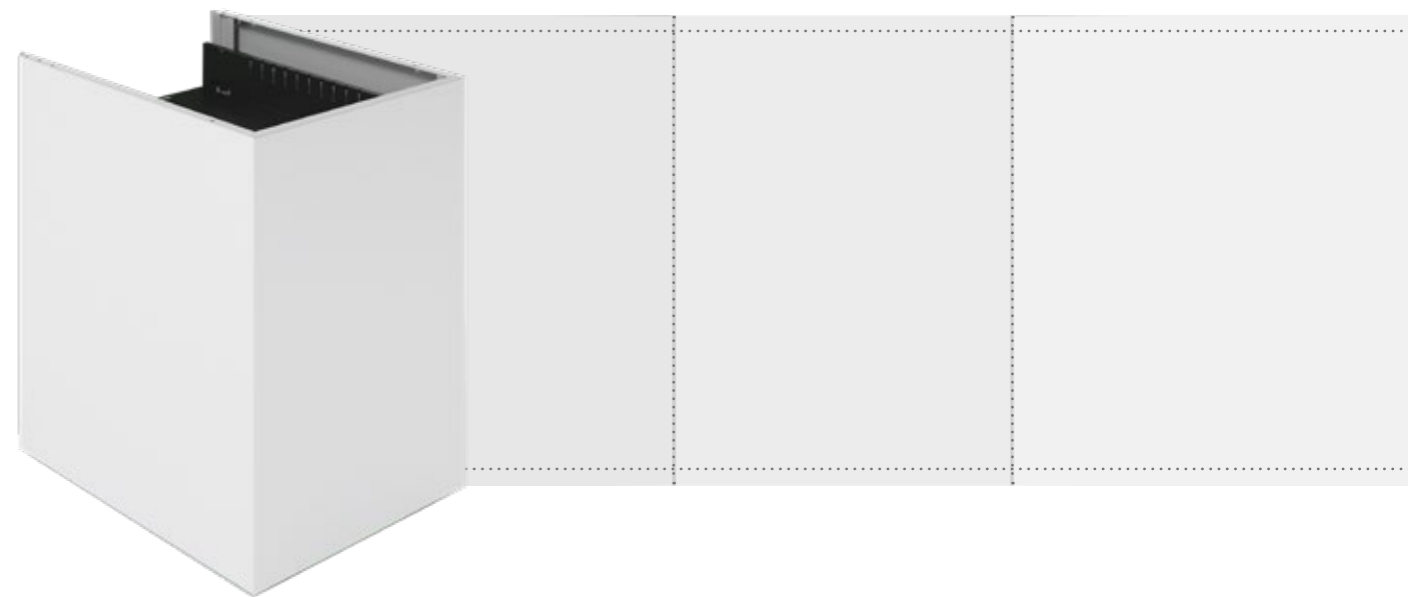
STEELBOX, UP-GRADE YOUR STORAGE





Three-in-one Smoothness

Steel panels on both side and the back are one-piece made, so there will be no trouble of welding projections that cause mutual abrasion with objects



6.8mm-thick Top Board, Sheet yet Strong

Steelbox adopted Italian Salvagnini bending equipment for high-precision processing. After a series of testing, the top edge thickness is narrowed down from 25mm to the limit of 6.8mm. The top edge is of the same thickness with the side edge, making the cabinet more delicate and light in top.



6.8mm





Harmonious tones

Cabinet body available in 2 colors and cabinet door available in 6 colors, fashionable and matching.





Artistic Inward Handle

The inward handle has a concise outer shape and is designed with wave-shaped touch to fit user's fingers, offering smooth

Delicate planter adds mini-forest

W900mm/1200mm*H250mm Steelbox planters are innovative designs which turn scattered greenery into a mini-forest in the office. 1.5 gallons/2 gallons of flowerpots can be combined inside and together





Wood grain laminate/steel top panel

The top panel are available in 7 wood grain colors to achieve harmony with the steel cabinet body.

Modern, secure, and artistic

Quality WT smart lockset

The cabinets are equipped with a WT smart lockset for document confidentiality. You may set four digit as the password to turn common



Right cabinets accelerate efficiency.

The chairs and tables are main servers in the office, and cabinets act as space planner: they may stand between workstations as light separation or stand against the wall to provide shared storage.



Welcoming Space with Proper Display

Reception spaces and common reading spaces need to be thoughtful and welcoming. Opening half of the cabinet for shared reading and interior decoration can help create easy and welcoming atmosphere during visitors' stay here.

"UP"-grade Office Storage

Organized storage beyond your imagination



There are always files and documents that you don't use them often but may need them in temporary cases. The 2140mm-high cabinet set provides a large storage capacity on high and low floors to better sort out documents based on their priorities and use frequencies.



Beauty Of Haziness



Glue Edge for Higher Safety

Steel cabinet plus glass door, storage is clearer and more organized than ever; impedance glue added on the edge of the glass door enhanced the safety of opening and closing.

Lockable Rolling Door



In addition to the wood grain top board, Steelbox has PP patterned rolling door to match with the bright and clean steel. The collision of different materials endows the space with unique rhyme.



The acoustic cotton padded inside the door ensures low sound during opening and closing, and the lock guarantees document safety when needed.



BOSS'S CABIN

Premium Office Furniture





Mailbox Cabinet

The interchange station of information



1



2

Mailbox Cabinet

The interchange station of information
Mails, categorized documents, and forms need their exclusive interchange stations. Steelbox mailbox cabinets serve this purpose perfectly by providing an opening for anything delivery and organized internal



Exclusive use



Bank and education scenarios may need cabinets used as personal lockers. Steelbox locker cabinets are designed with square holes to maintain good ventilation and insertable name tag slot.



PROGRESSIVE STORAGE IN LIMITED AREA

The 3H (1090mm) bottom cabinet can be overlapped with 3H/2H (700mm)/1H (350mm) cabinets such as slide door cabinets, drawer cabinets, wardrobe cabinets. The cabinets can be easily matched as the functions are freely selected. Utilization of the space is increased as personal and sharing requirements are fulfilled.



CLEAR MIND AND AGILE ACTIONS IN CLEAN AND ORGANIZED SPACES



Steelbox includes a bed cabinet, so that employees can enjoy a quality noon nap and be recharged for the afternoon. The 1950mm*570mm bed has eight feet and is equipped with comfortable setting sponge mattress.





GC25-2.039052/K/WF
W390*D523*H445(mm)



GC24-2.039052/WF
W390*D523*H567(mm)



GC23-2.039059
W390*D599*H715(mm)



GC22L/R-2.100045
W1000*D450*H632(mm)



GC22L/R-2.100045K
W1000*D450*H632(mm)



GC22R/L-2.100045G
W860*D500*H638(mm)



GC34-2.075/080/090/
W744*D497*H725(mm)
W794*D497*H725(mm)
W894*D497*H725(mm)
W994*D497*H725(mm)



GC21-2.073050
W730*D500*H725(mm)



GC21-2.068050
W680*D500*H638(mm)



GC26-2.070035
W706*D356*H400(mm)



GC20R-2.060115 /135
W300*D600*H1142(mm)
W300*D600*H1344(mm)
W300*D700*H1142(mm)
W300*D700*H1344(mm)



GC20L-2.060115/135
W300*D600*H1142(mm)
W300*D600*H1344(mm)
W300*D700*H1142(mm)
W300*D700*H1344(mm)



GC35-2.090045
W900*D450*H350(mm)



GC36-2.090045
W900*D450*H350(mm)



GC37-2.090045
W900*D450*H700(mm)



GC38-2.090045
W900*D450*H700(mm)



GC00-2.090045
W900*D450*H700(mm)



GC33-2.090045
W900*D450*H700(mm)



GC01-2.090045
W900*D450*H1050(mm)



GC02-2.090045
W900*D450*H1050(mm)



GC03-2.090045
W900*D450*H1050(mm)



GC04-2.090045
W900*D450*H1050(mm)



GC32-2.090045
W900*D450*H1050(mm)



GC05-2.090045
W900*D450*H1090(mm)



GC06-2.090045
W900*D450*H1090(mm)



GC07-2.090045
W900*D450*H1090(mm)



GC08-2.090045Y
W900*D450*H1090(mm)



GC08-2.090045X
W900*D450*H1090(mm)



GC08-2.090045
W900*D450*H1090(mm)



GC90-2.090045
W900*D450*H1090(mm)



GC98-2.090045
W900*D450*H1790(mm)



GC97-2.090045
W900*D450*H1790(mm)



GC95-2.0900513
W900*D515*H1790(mm)



GC96-2.0900516
W900*D515*H1790(mm)



GC91-2.120045
W1200*D450*H1090(mm)



GC91-2.120045M
W1200*D450*H1090(mm)



GC92-2.120045
W1200*D450*H1090(mm)



GC93-2.120045
W1200*D450*H1090(mm)



GC93-2.120045M
W1200*D450*H1090(mm)



GC94-2.090045
W1200*D450*H1090(mm)



GC27-2.09/1200045
W900*D450*H250(mm)
W1200*D450*H250(mm)



GFJ05.090045
W876*D426*H10(mm)



GFJ05.120045
W1176*D426*H10(mm)



GFJ03./068/086/154050
W680*D500*H7(mm)
W860*D500*H7(mm)
W1540*D500*H7(mm)



GFJ03.090045/051/120045/B
W900*D450*H12(mm)
W900*D515*H12(mm)
W1200*D450*H12(mm)
W1200*D450*H7(mm)



GFJ03.068/086/154050M
W680*D500*H12(mm)
W860*D500*H12(mm)
W1540*D500*H12(mm)



GFJ03.090051M
W900*D515*H12(mm)



DCD.09/12
W901*D451*H12(mm)



GFJ01.039052
W390*D523*H50(mm)

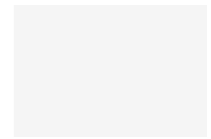


GFJ02.070045
W700*D450*H50(mm)

Side panel/steel top board



Meteor grey



Matte white

Material

Cushion fabric material



TM-VI10B



TM-VI11B



TM-VI21B



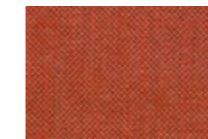
TM-VI27B



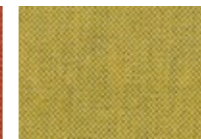
TM-VI29B



TM-VI30B



TM-VI42B



TM-VI54B



TM-VI64B



TM-VI81B



TM-VI82B



TM-VI90B

Cabinet door/handle



Meteor grey



Mocha



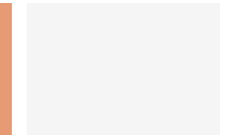
Morandi green



Ginger yellow



Apricot



Matte white

wood grain color top board



Ironwood



Cromona oak



Maple



Castin



Cass walnut



Red apple



Virginia walnut