

**BOSS'S CABIN**  
Premium Office Furniture

[WWW.BOSSESCABIN.COM](http://WWW.BOSSESCABIN.COM)



**CHEN**

ADMINISTRATIVE OFFICE  
544 TTK Road,  
Alwarpet  
Chennai - 600018, India  
Tel: +91 44 42030741, 24617933

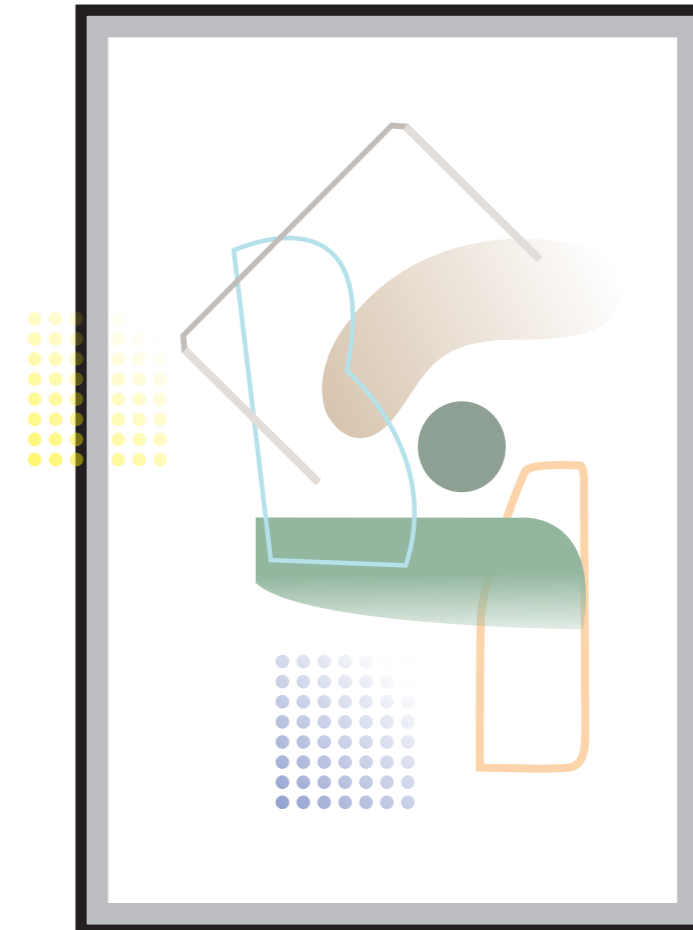
CHENNAI SHOWROOM  
17, Selvarangaraja Street  
Anna Salai, Saidapet  
Chennai - 600015  
Tel: +91 44 42040568, 42040569

BANGALORE SHOWROOM  
14, Langford Garden  
Richmond Circle  
Bangalore - 560025  
Tel: +91 80 22222459, 42129128

**BOSS'S CABIN**  
Premium Office Furniture

## Enjoy a leisure moment through fashionable seating

People like to chase fashion when it comes to apparel, the same goes for seating. A leisure moment is when you zonk out and refresh yourselves on the Chen sofa. Every hard-working people deserve to be respected. On your way to realize your dreams, Chen is always your most faithful partner.

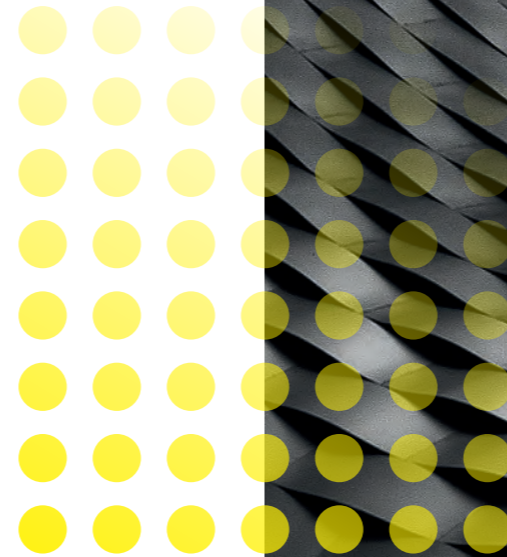


Tufting is an upholstery technique that was originally used to keep a sofa's filling evenly distributed. This was done by sewing through the upholstery fabrics and filling of an upholstered sofa and then securing the stitch at the other side (in the case of cushions) or inside the sofa (for fixed back sofas). This created dips in the upholstery in which buttons were often used to disguise the stitches. Because of the extra reinforcement, tufted furniture was much more durable than non-tufted furniture.

Tufted upholstery is popular because it adds more visual interest to furniture and lends a more sophisticated air to a room.

Imagine the same sofa without tufting. While some may prefer the simple lines, others would consider the design to be more basic and mundane even. Adding tufting to a sofa instantly makes it appear more interesting and well-designed. Tufting can be done on the sofa back, sofa seat, or both.

Widely applied in Chen, blind tufting lacks any recognizable pattern. Since there are no buttons, ribbon or other accents to pull off during playtime, this is a popular choice for those with kids and pets, as well as those who prefer a minimalistic look.



The soft beige color dilutes the monotony of workplaces and creates a calm and healing atmosphere. A combination of single and double seaters makes the integral layout more scientific and practical. Surrounded by such a pleasant environment, you can make acquaintance with business partners in a comfortable manner.





A mix of cotton and linen gives a pristine feeling. A fine-tuned armrest brings you seamless comfort. Here is a snugger for you to appreciate the joy of reading.

Until today, tufted sofas are still being treated as a classy furniture piece and nothing screams "mid-century modern" louder than a nifty tufted sofa.



Let's all step into the time machine and get retrofied! The vintage style of the sofa echoes with the wood grains and presents an unassuming elegance. The admiration for craftsmanship, gentility, and quality has been revealed through nuances.

## / An ode to urban life

A classic is like a book that has never finished saying what it has to say.

*-Italo Calvino*

Minimalist design has been described as design at its most basic, stripped of superfluous elements, colors, shapes, and textures.

Its purpose is to make the content stand out and be the focal point. From a visual standpoint, minimalist design is meant to be calming and to bring the mind down to the basics.

Less is more may sound like a cliché, but with the minimalist design trend, that's the essence of this school of design. As a design movement, minimalism is still relatively new, having only come into its own in the late 1960s and early 1970s, particularly with American visual art.

In its most stripped-down definition, minimalism is about designers expressing only the most essential and necessary elements of a product or subject by getting rid of any excessive and, therefore, unnecessary components and features. As with many other movements, the minimalist design trend is a reaction to and rejection of an earlier design philosophy that fell out of favor.

Leisure sofa

Timeless beauty, comfort, craftsmanship and sustainability are so deeply ingrained in Chen series that only sight and touch are required to understand and fall in love with them. Exquisite geometric lines constitute a modern fashionable style. Thanks to its dainty legs, the sofa looks like something floating above the sleek, bridge-like steel legs, in what can be seen as a tribute to mid-century American design, adding an illusory sense to the whole space. Sinking into it, you may have the feeling of roaming in the wonderland, or embarking on an adventurous journey. The boundary between reality and fantasy blurred here.

Small-configured sofas make diversified combinations possible, satisfying the demand of different-sized spaces such as the leisure space, which is a must for modern offices. Just imagine how cozy it will be to sink into the sofa, take a sip of coffee and read a book, or just zonk out there. It is indeed as easy on the eye as it is to relax in.

Clean in shape, honest in materialization and timeless in design, this space neutralizes the fast-paced tempo of modern work and allows you to get away from the bustling metropolitan lives without going away. Some may liken it to a charging station, which braces employees for the upcoming tasks in a better condition, but for me, a sofa is conviviality, it is conversation. When you think of a sofa, you think of friends or family around you.

Meteor grey gives the sofa a hint of weightlessness and brings visual lightness to any environment. It helps to mitigate the rigidity of workplaces and cultivate an amicable atmosphere.







"What on earth could be more luxurious than a sofa, a book, and a cup of coffee? Was ever anything so civil? "

—Anthony Trollope

Today's workers spend a much longer time at companies; thus, their expectations of an ideal workplace have also experienced deep transformations. Workplaces should evolve over time, meeting the needs of enterprises and employees. Adaptive workspaces dissolve disciplinary boundaries and distinctions between work and rest, allowing for a work-as-pleasure environment.

In terms of work-life balance, sofas play a more significant role than you might imagine. Calming influence, companion, centerpiece. Fine lines and proportions. Chen is a sculpture in space. It confidently undertakes the role as an oasis of well-being, but it nevertheless also works together with others in an ensemble and creates a quite comfortable atmosphere.

The pursuit for perfection never ends. Chen is meticulous at born and cares about every single detail.



Since ancient times, metal materials have been used in many areas as well as in furniture production. Metals, which were mostly used as joining elements, accessories, and carriers, are now also used to form a complete furniture. Bronze, gold, silver and iron are the most widely used metals in the past, while steel and aluminum are the most used metals in today's furniture production.

The processing of the metals does not differ much from the previous periods. They can be formed by bending with heat, by force effect or by cutting, drilling and abrasion techniques. However, the advancement of technology and the continuous development of new production techniques and new materials also contribute to the creation of new forms. The ease of forming and joining of the material, its ability to be found in standard sizes, its durability and its ability to recycle is assuring.

Metals psychologically often symbolize magnificence or advanced technology. For example, stainless steel in places requiring hygiene, aluminum in places where lightness is important, or bronze or gold may be preferred in places where it is desired to emphasize glory.



Working sofa



People from different backgrounds may have divergent ideas on the same subject. When running a business, it's natural for you to encounter different people. Thus, we need a space where different minds could gather up, where we could deepen understandings over a novelty, exchange ideas, set aside controversies, and hopefully reach consensuses.

Sofas have a natural advantage over breaking the ice and bridging the gap. A combination of one-seater and two-seaters could accommodate several peoples at the same time. You can make a selection from different configurations based on the specific situations of your rooms.

This process may be strenuous cause you need to figure out which thought should be insisted and which could be compromised, just like climbing a mountain. But in the end, the splendid scenery captured at the summit testifies that the efforts you put into are worth it.

/ Talk a blue streak

A modern, luxury mechanic aesthetics can be presented through a bold application of metals as Chen sits on elegant, cast metal feet. It embraces a simple yet powerful temperament and adopts characteristic metal contours to highlight a chic and elegant space. A mix of materials strengthens the uniqueness of furniture and makes it stand out at the first sight.

As for Chen series, we adopt the classic metal + leather formula. Metal and leather reinforce each other and endow the space with a rich of connotations. Also, the resemblance between colors of leather and metal leg ensures the visual harmony of the whole piece of furniture, and makes this room more eye-pleasing without keeping a high profile.



The flat armrest offers an ideal place for you to lay your tablet and finish some simple tasks.

Cold-rolled steel leg



/ Let a hundred flowers blossom

A Sofa is the crowning glory of a living room. Hours of gossiping, leisurely TV watching experience and rendezvous with guests; all take place on your dear sofa. A sofa's back makes or breaks those good times.

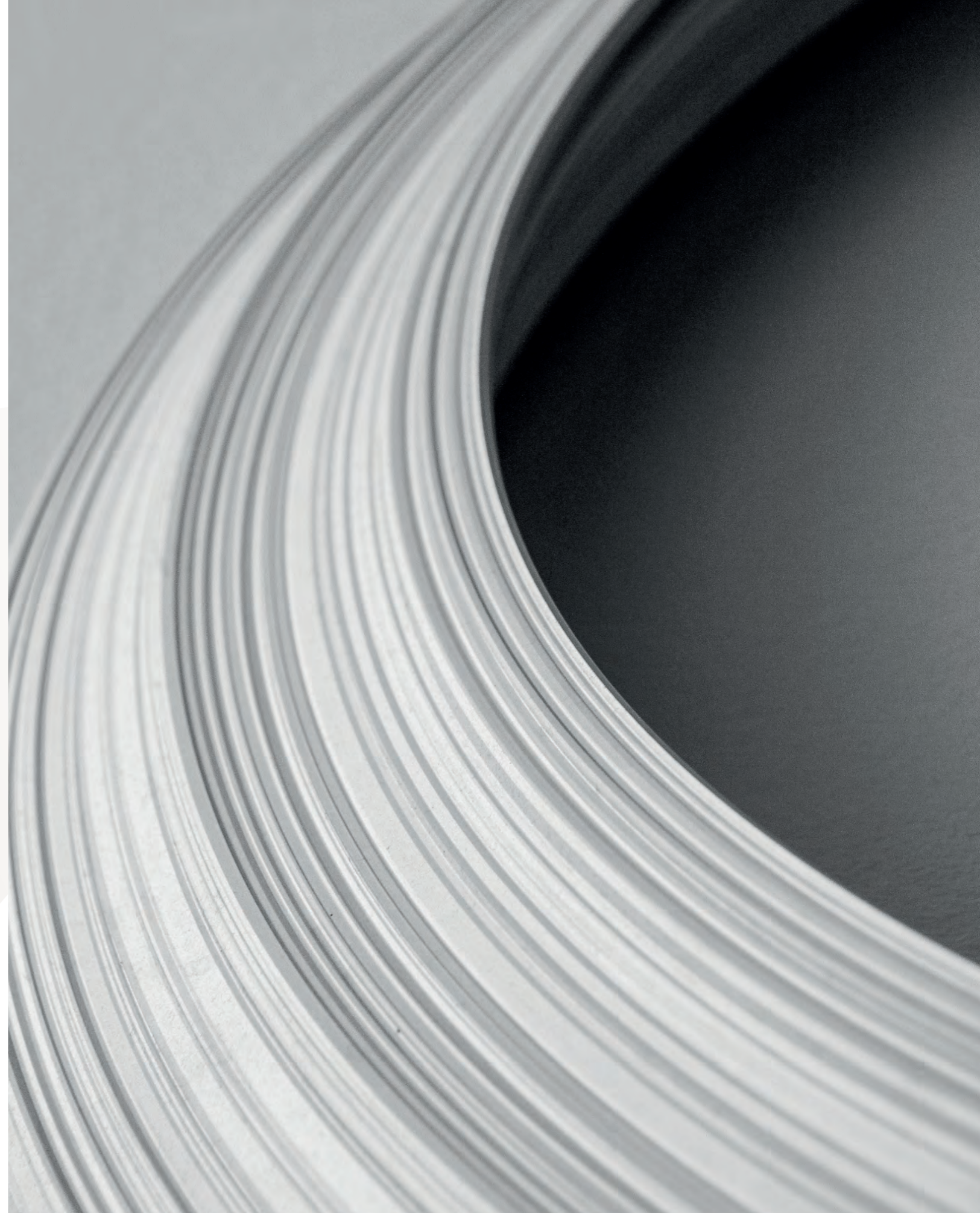
It directly impacts the occupant's shape of spine and back alignment. Thus, benefiting health accordingly! When choosing sofas, there is more to it than just color and fabric. Quality and personal comfort surpass all.

A firm sofa is ideal for maximum back support. It blends in well with formal ambiance as well as good for long hours of informal gossip. The poor back support can lead to poor blood circulation and poor pressure relief in major parts of the body like neck, spine, etc.

A lot of the time, the structure, frames and suspension mechanism of a sofa dictate the firmness or softness. A sofa with a proper suspension mechanism and inner spring coils can do with a comparatively softer sofa.

A leather sofa can lend a certain elegance to a room that is hard to duplicate in a fabric. If you like a contemporary or modern look, leather sofas tend to appear sleeker and more high-end than most fabric sofas.

Chatting sofa





Creative ideas grow out of artistic environments. Chen series adds a final touch to space and endows it with artistic feelings, thus broaden the imaginations of people working inside.

/ A touch of  
inspiration想



## / Lift your spirits

Trends come and go while classic design is constant. The soft sofa backrest is designed based on ergonomics, with reference to the golden section principles. These elements are combined to create an oasis of soft, snug comfort.

The height of the backrest is specifically designed in accordance with the sitting posture of most users so that people can feel that their necks and heads are strongly supported as always, providing users with body-conforming comfort. The unique tufting design deepens the distinctiveness of this artwork and makes the filling steadier, so as to extend the service life of sofa and makes its maintenance easier. Chen - ride the waves of success through passing years and fleeting fashions.

Thick and fluffy foam filling gives users soft support and naturally fits the contour of human bodies. Chen is comfortably soft and invitingly cosy, while exuding a modern flair. Employees could relax themselves, or take a nap to refresh themselves and deal with work effectively.









The straight line is an invention of the human mind. The Universe is curved, the curve is natural and free, the straight line is artificial, forced. "What attracts me is the curved line, free and sensual. The curved line that I find in the mountains of my country, in the sinuous course of its rivers, in the clouds in the sky, in the body of the beloved woman. The whole universe is made of curves," wrote Oscar Niemeyer, the world's greatest architect who has made the sensuality of curves his unmistakable signature.

Furniture with smooth and delicate curves is always exceptional and eye-catching in ways that make it very desirable. At the same time, curved furniture is definitely rare because of the difficult crafting process which further adds to its desirability and uniqueness.

Adding curves in your room whether big or small helps soften the feel of the place. More often than not our spaces tend to be boxes. The curves of the furniture help take the edge off. Literally.

The sofa is where everyone gravitates to. It's a great statement piece for a space. Bringing in curved furniture, especially a sofa is guaranteed impact and something unique if you're considering a more contemporary look.

Lunch break sofa







### French-style edge hemming

The term Nappa leather refers to the place where it first appeared. In 1875, Emanuel Manasse coined the term while working in Napa, California at the Sawyer Tanning Company.

In Manasse's day, the process of making Nappa leather was very specific. It entailed vegetable tanning agents and alum salts. Originally used to make gloves, Nappa was often dyed various colors.

The Nappa leather tanning process hasn't changed much since Manasse's day. Today, manufacturers use salts such as chromium and aluminum sulfate. They dye Nappa leather with water-soluble colorants, so the finished product retains its vibrant color for decades, seldom fading despite wear and tear or exposure to the elements or sunlight. Memorized by times. Nappa leather accompanied by graceful edging exemplifies an exalted temperament.

Clean and dynamic lines tell the pleasure of life and constitute a vivid living scene - different people gathered here, shaking hands, exchanging name cards, talking, and bidding farewell. The reception space is filled with a gentle and placid aura. Every minute spent here will be memorized by times.



Chen invites users to stretch out lengthwise and use the raised armrests as a neck rest – for instance, as a relaxing place to read or take a nap. Broad and flat armrests can be used as sleeping pillows for you to lean on. The multi-layer design of armrest makes a loud statement of modern chicness and the slender body underscores an elegant environment. With these special features, Chen offers an inviting place to prop up your feet and curl up on, or, as comfortable seating for two or three.

A sofa suitable for both sitting and lying undoubtedly brings more possibilities to a limited space. No matter you want to sit, lie or lean on it, you can always find the most comfortable posture. After dealing with so much work, getting tired is a natural result and you deserve a rest. So, during the lunch break, you can take a nap here and listen to some soft music. A soft and high-resilient seat cushion makes you feel lighthearted more than ever before, as if lying on a fluffy cloud.





Specification

<b>SC61.3.CN.G/NG</b> <b>SC61.3.WP.G</b>	<b>SC61.1.CN.G/NG</b> <b>SC61.1.WP.G</b>	<b>SC61.3.CN.M/NM</b> <b>SC61.3.WP.M</b>	<b>SC61.1.CN.M/NM</b> <b>SC61.1.WP.M</b>	<b>SC61.3.MR.G</b>	<b>SC61.1.MR.G</b>
W1900*D820*H810(mm)	W780*D820*H810(mm)	W1900*D820*H810(mm)	W780*D820*H810(mm)	W1900*D820*H810(mm)	W780*D820*H810(mm)
<b>SC61.3.MR.M</b>	<b>SC61.1.MR.M</b>	<b>SC62.3.CN/WP</b> <b>SC62.3.CN.N</b>	<b>SC62.2.CN/WP</b> <b>SC62.2.CN.N</b>	<b>SC62.2.CN/WP</b> <b>SC62.2.CN.N</b>	<b>SC63.3.CN/WP</b> <b>SC63.3.CN.N</b>
W1900*D820*H810(mm)	W780*D820*H810(mm)	W2000*D830*H810(mm)	W1430*D830*H810(mm)	W920*D830*H810(mm)	W1960*D820*H810(mm)
<b>SC63.2.CN/WP</b> <b>SC63.2.CN.N</b>	<b>SC63.1.CN/WP</b> <b>SC63.1.CN.N</b>	<b>SC64.3.CN/WP</b> <b>SC64.3.CN.N</b>	<b>SC64.1.CN/WP</b> <b>SC64.1.CN.N</b>	<b>SC65.3.CN/WP</b> <b>SC65.3.CN.N</b>	<b>SC65.1.CN/WP</b> <b>SC65.1.CN.N</b>
W1400*D820*H810(mm)	W840*D820*H810(mm)	W1870*D820*H810(mm)	W760*D820*H810(mm)	W2100*D830*H810(mm)	W1020*D830*H810(mm)

Material

SC61 / SC62 / SC63 / SC64 / SC65

ZP201	ZP553	ZP2440	ZP9815	ZP9922	ZP9817
TP-PV14	TP-PV50	TP-PV29	TP-PV52	TP-PV12	TP-PV10
TP-NP10H	TP-NP11H	TP-NP14H	TP-NP21H	TP-NP27H	

SC61

SM-SF27B	SM-SF29B	SM-SF35B	SM-SF42B	SM-SF50B	SM-SF62B	SM-SF65B	SM-SF80B	SM-SF81B

Given that products may be updated constantly, no further notice will be given in regard of changes in specification, and the real product shall be considered as final.